



MONTHLY MEMBERSHIP PROGRESS REPORT

Results as of: 7/31/2015

Multiple District 14

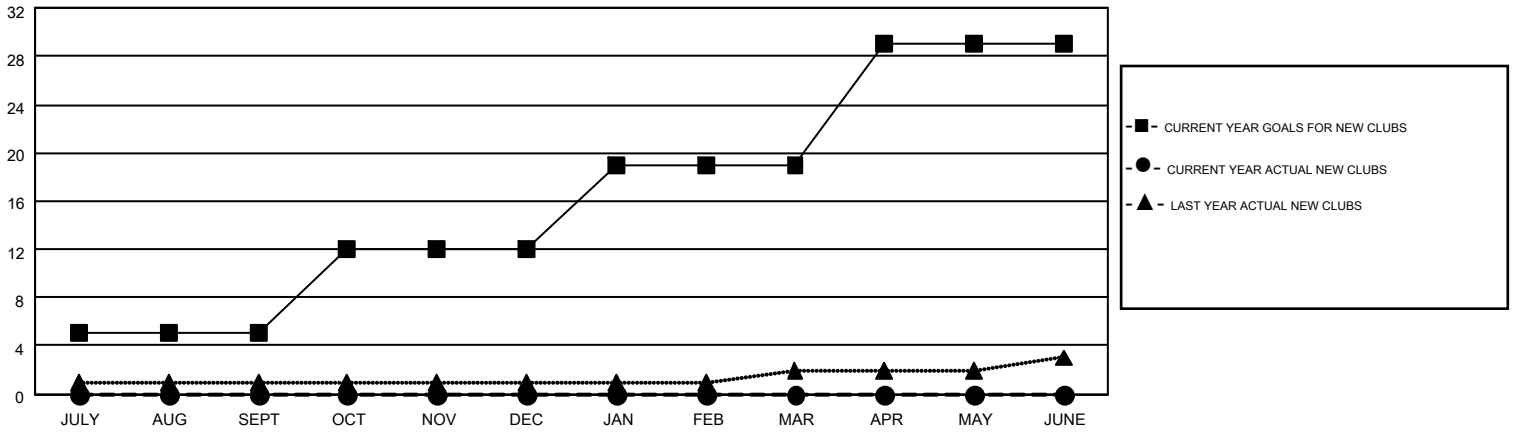
LOCATION: PENNSYLVANIA

GMT: CINDY GREGG

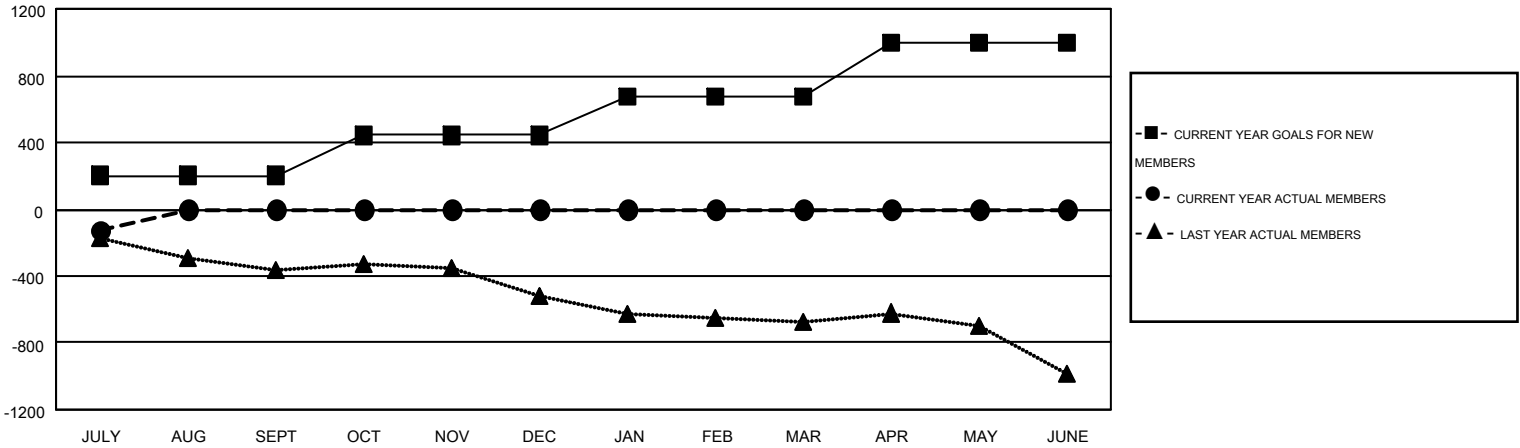
GMT CA 1

| Clubs | | | | | Members | | | | |
|-----------------------|---------------|-----------|---------------|---------------|-----------------------|-----------------|-------------------------------|-----------------|---------------|
| RESULTS FOR 2015-2016 | | | | | RESULTS FOR 2015-2016 | | | | |
| QUARTER | NEW CLUB GOAL | NEW CLUBS | DROPPED CLUBS | NET GAIN/LOSS | QUARTER | NEW MEMBER GOAL | CHARTER AND NEW MEMBERS ADDED | DROPPED MEMBERS | NET GAIN/LOSS |
| JULY/AUG/SEPT | 5 | 0 | 3 | -3 | JULY/AUG/SEPT | 203 | 80 | 201 | -121 |
| OCT/NOV/DEC | 7 | 0 | 0 | 0 | OCT/NOV/DEC | 239 | 0 | 0 | 0 |
| JAN/FEB/MAR | 7 | 0 | 0 | 0 | JAN/FEB/MAR | 237 | 0 | 0 | 0 |
| APR/MAY/JUNE | 10 | 0 | 0 | 0 | APR/MAY/JUNE | 319 | 0 | 0 | 0 |

GOALS AND ACTUAL NEW CLUBS CUMULATIVE



GOALS AND ACTUAL MEMBERS CUMULATIVE



| | | | |
|------------------------|---|----------------------------|-----------------|
| DROPPED CLUBS: 3 | 49 CLUBS OF 708 ADDED 1 OR MORE NEW MEMBERS | <u>GENDER DISTRIBUTION</u> | |
| <u>DROPPED MEMBERS</u> | | MALE | 15,401 (77.19%) |
| DECEASED | CLICK HERE FOR HEALTH ASSESSMENT DATA | FEMALE | 4,551 (22.81%) |
| CLUB CANCELLED | | FAMILY UNIT MEMBERS | 3,489 |
| OTHER | | HEAD OF HOUSEHOLD | 1,687 |
| TOTAL | | NON-HEAD OF HOUSEHOLD | 1,802 |